

Pastalinda®

SINCE 1950



CLASSIC
Model 200 and 260



Design - Durability - Versatility

The Pastalinda Classic machine allows you to prepare all kinds of pasta and much more!



CLASSIC 200 CLASSIC 260
7.87 in 10.23 in
Width of dough and rollers



0.098 in. 0.295 in.
Cuts ribbons
and tagliatelle

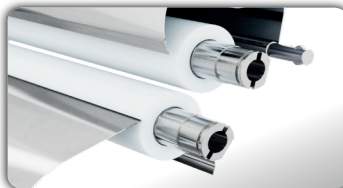
Includes
2 clamps
1 crank handle



9 kneading positions
and 2 cutting positions



Compatible with accessories
Stainless steel combs



Steel and polymer solid rollers
Kneads and stretches



Metal gears
Stainless steel structure

THE NEW INDIA ELECTRIC & TRADING CO.

38 Ambalal Doshi Marg, Hamam House, Near BSE, Fort, Mumbai - 400 023. India.

Contact : +91-9833411770 / 022-22651177 / 22651597 | Email : nietco@hotmail.com | www.pastamachine.in